

## INSTALLATION & MAINTENANCE GUIDELINES FOR WINDOW FABRICATORS & INSTALLERS

RFG *rClean*<sup>®</sup> has been specially designed to remain cleaner for longer than conventional glass. A transparent coating on the external surface of the glass harnesses the power of UV rays and rain or water to break down dirt and grime then wash it clean away.

The coating is totally integrated into the surface of the glass and is highly durable. However, as with all coated glass, certain guidelines must be followed to ensure correct installation and proper maintenance of RFG *rClean*<sup>®</sup>. Carefully follow the instructions below for best results.

### Receipt of glass

RFG *rClean*<sup>®</sup> is delivered with a special label affixed to the opposite side of the coated surface. This label must remain in place until delivery on site.

### Storage

- As with all coated glasses, RFG *rClean*<sup>®</sup> must be stored in a clean, dry, ventilated area, protected from any extreme variations in temperature and humidity.
- Keep the product away from confined areas where there is an obvious presence of silicone or sealant vapours.

### Handling/Equipment

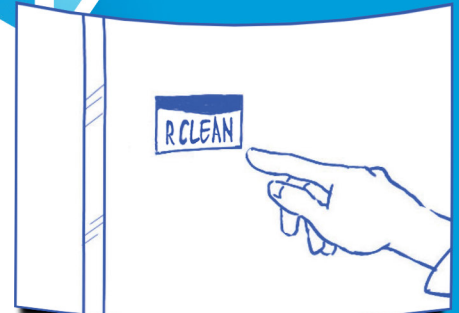
- Avoid all contact with sharp, metal or abrasive objects which may scratch the coating (e.g. belt buckles, Stanley knives, razors).
- Avoid contamination from hands which have been in direct contact with silicone.
- Use clean, dry, soft safety gloves. Avoid those with rubber or silicone grips.
- Hand held or machine suckers must be in a good condition, clean and completely silicone-free. In order to ensure their cleanliness, protective covers are available.

### Assembly into frame

- Always position the coated surface facing towards the exterior. The coated face can be identified by the presence of a special RFG *rClean*<sup>®</sup> label on the opposite side.
- Avoid all contact with linseed oil and silicones during assembly and installation (including setting blocks, grease or silicone sealants, adhesives, glues, lubricants).
- Glazing tapes used in timber frames should not be capped with silicone.

#### Gaskets

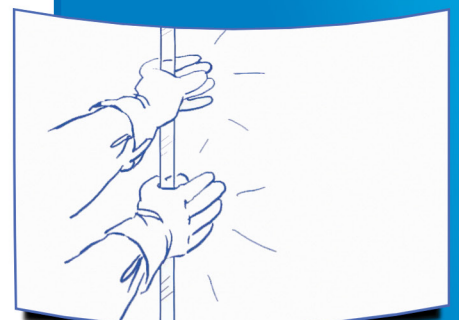
- The use of pre-formed or dry gaskets (such as EPDM gaskets) is recommended.
- Limit contact between the gasket and the glass to the precise area necessary.
- Glazing gaskets must not be lubricated with silicone oil (guidelines for removing silicone oils are available).



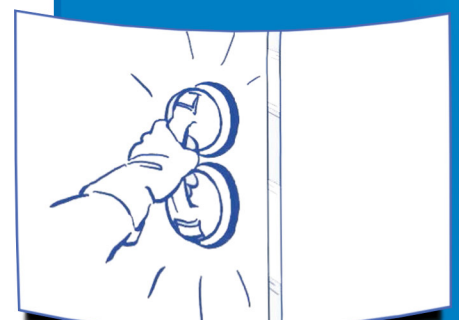
RFG *rClean*<sup>®</sup> will arrive with a label on the opposite side of the coated surface



Always glaze the RFG *rClean*<sup>®</sup> face towards the exterior



Always handle using soft, clean silicone-free gloves



Ensure that suckers are clean, well maintained and silicone-free

## Sealants

The use of silicone sealants must be avoided :

- Where possible avoid all use of polymerisable mastics as they release a number of oils which diminish the efficiency of RFG rClean® especially around the edges.
- Avoid all use of linseed oil mastics or putties.

## On-site installation

### Protection

If any other works are taking place in the vicinity of RFG rClean® then protect with a clean sheet to prevent any splashes or staining from aggressive compounds (paint, varnish, glue, sealant, cement, plaster, mortar etc.). This will also protect the product from abrasive or hot particles (grinding or welding sparks etc.).

### Sealants

The use of an MS Polymer based sealant is recommended.

### Lead flashing

Where lead flashing is adjacent to the glass, staining can occur from carbonate run-off. This should be minimised by using a suitable patination product whilst the lead flashing is still new.

### First clean-down

Where polymerisable sealants have been used wait until the full polymerisation has occurred before cleaning the RFG rClean® coating. After carefully peeling off the special label, start with a rinse down of the coated face and complete with a normal maintenance routine (see below).

### Self-cleaning function

In the days after the installation and the first clean-down, the special RFG rClean® coating will be progressively activated by UV rays from the sun. Water will sheet off the surface of the glass without forming droplets. This initial UV generation of the coating can vary according to the season and the orientation of the glazing.



When cleaning for the first time, start by simply rinsing with water or a mild window cleaner



As and when cleaning is required, the use of a soft, clean sponge or cloth is recommended

## Routine maintenance

RFG rClean® is not a '100% maintenance-free' product. Should the glass require occasional cleaning please refer to the RFG rClean® maintenance guidelines.

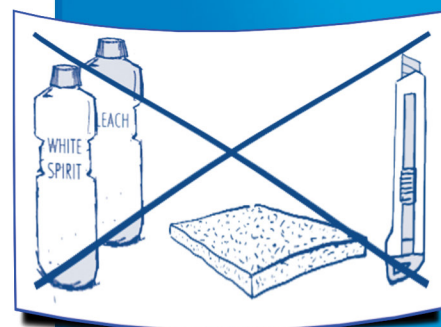
Should the glass require cleaning this can be done by simply rinsing with soft water.

Standard, mild glass-cleaning products can also be used if required.

Where polymerisable sealants have been used wait until the full polymerisation has occurred before cleaning the RFG rClean® coating. After carefully peeling off the special label, start with a rinse down of the coated face and complete with a normal maintenance routine.

### Important

- Do not use any glass treatment products containing silicones or abrasive particles.
- Do not use any commercial cleaning products which are intended specifically for cleaning elements other than glass.
- Do not use chemical products : soda, bleach, washing powder, White Spirit etc.
- Avoid contact with all sharp or abrasive objects including jewellery, buckles, tape measures, razor blades, Stanley knives, scouring pads, steel wool, sandpaper etc.



Avoid all use of aggressive or chemical compounds and abrasive equipment/tools

This document contains the main instructions for the maintenance and installation of RFG rClean® glass product. RFG has carefully checked the accuracy of the information contained in this document at the time of publication. However, RFG reserves the right to modify or add any information without prior notice.



RIOU Flat Glass

ZAC Les Vergers de Quincangrogne  
27310 BOURG-ACHARD - FRANCE

Tel. +33 (0)2 32 20 01 80

Fax +33 (0)2 32 20 55 98